

# 16 Graphs and Charts

---

In this chapter you will become familiar with all the SpectrumSCM graphs and charts - how to create them and the meaning and use of the information in these graphs. You will also learn how to personalize your graphs and save personalized versions as well as how to create a custom graph and install it in the system

The Spectrum system provides comprehensive set of pre-defined graphs . SpectrumSCM provides many graphs and charts necessary for the system to be as useful as possible right out of the box.

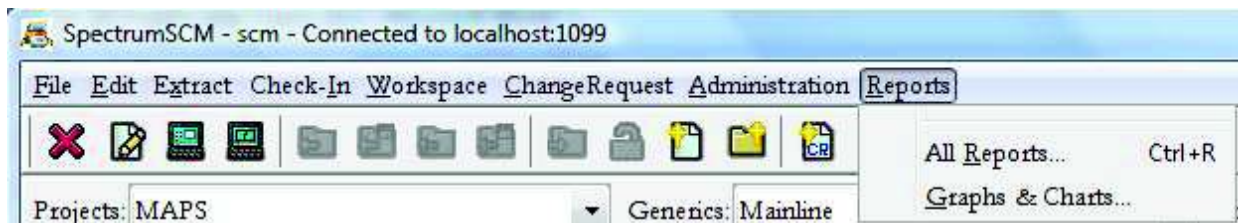
This feature is available as an additional optional module (SpectrumSCM Graphical Dashboard 1.0). The SpectrumSCM Graphical Dashboard 1.0 works in conjunction with the SpectrumSCM 3.0 version. The **Graphs & Charts** menu item will be activated when you purchase this module.

The following list describes the basic graphs that are packaged with the **SpectrumSCM Graphical Dashboard 1.0 Module**.

1. **Graph the CR by Project:** Graphs the CR counts across the selected projects.
2. **Graph the User CRs by State:** Graph all the CRs assigned to the selected user by their state.
3. **Graphs the CRs by State, Attribute:** Graph all the selected CRs by their attribute and optionally any of the defined CR attribute (i.e severity)
4. **Graph the active CRs by attribute:** Graph all active CRs by any of the defined CR attribute (i.e severity).
5. **Graph Change Request assigned to Generic(s)/Release:** Show all CRs that are assigned to the specified generic(s) by each of its releases.
6. **Graph Change Request assigned to Release(s):** Show all CRs that are assigned to the specified release(s) of a generic.
7. **Graph Change Request assigned to a User:** Graph the number of CRs currently assigned to the specified user.
8. **Graph CRs by Period:** Graph all the active CRs by their activity or creation date during a specified period.
9. **Graph CRs by Period/User:** Graph all the active CRs by Period and User
10. **Graph CRs by Period/Attribute:** Graph all the active CRs by Period and any of the defined CR attribute.
11. **Graph CRs by Period/Phase:** Graph all the CRs by Period and phase.

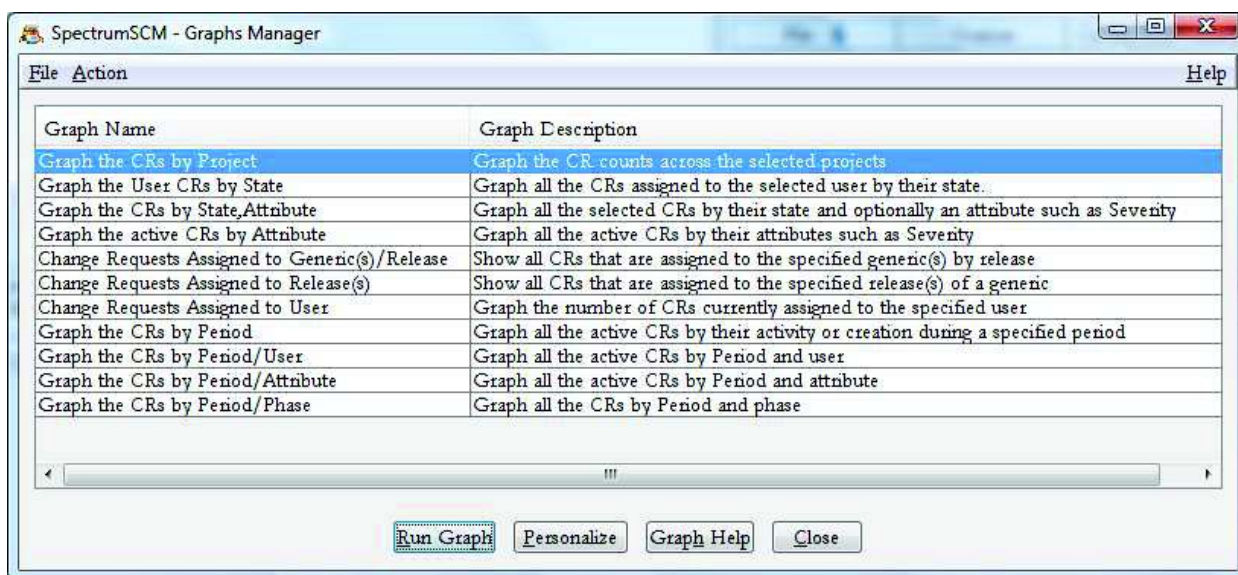
## 16.1 Running A Graph

Access the reports via the **Graphs & Charts** option on the **Main Screen** menu

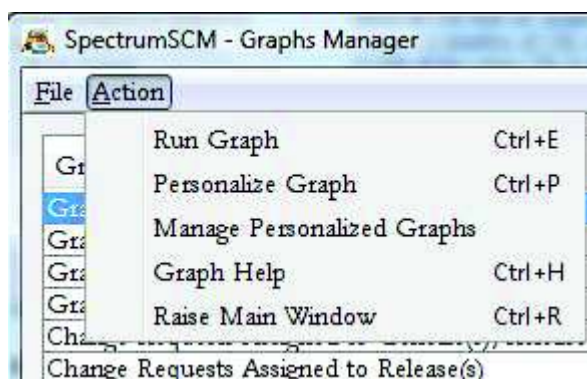


### Select a Graph

Select the graph that you desire, a brief description is listed to the right. More graph specific help can be displayed by selecting the "**Graph Help**" button.



The **Action** menu item offers the same options as on the screen plus an additional option to Manage Personalized Reports (see below for details).

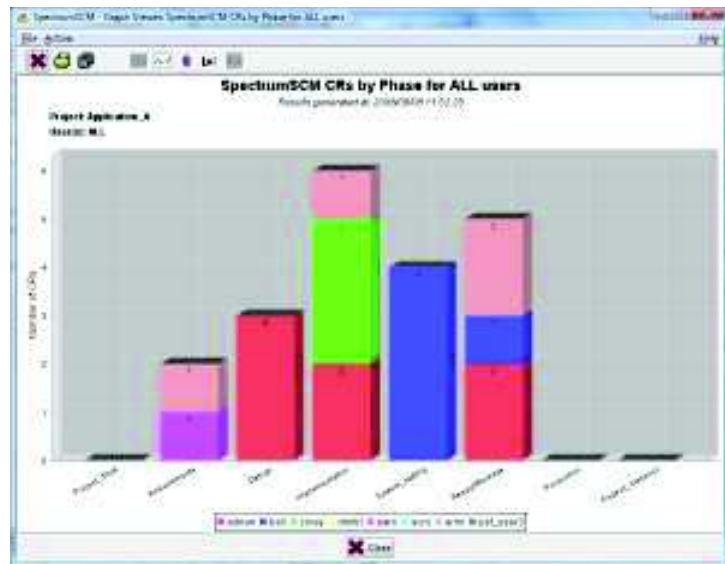
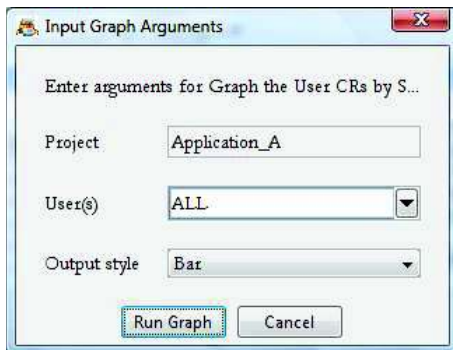


## Run a Graph

When the **Run Graph** button is selected a panel will be presented requesting all of the required input parameters. Some of these will be defaulted to values saved or selected on the main screen.

Enter any changes or refinements to the graph parameters and run the graph. The graph will be presented in the standard SpectrumSCM Graph Viewer.

You can print or save these graphs, to publish or include them as part of your status reporting.



## 16.2 Viewing A Graph

The graph viewer shows the graph by default as bar chart. Line and Pie charts can also be selected as one of the parameters (Output Style) or can be changed dynamically when viewing the graph. Zooming capabilities are also available both from the action menu items and by dragging over an area of interest with your mouse.

More information about the graph display can be found on the SpectrumSCM Graph Viewer Help menu.

The graphs have further drill down capabilities, to launch the specific change request details for further analysis and decision making.

## 16.3 Printing and Saving A Graph

The graph can be **printed or saved** to disk (as JPEG, PNG image or PDF file).

## 16.4 Personalizing a Graph

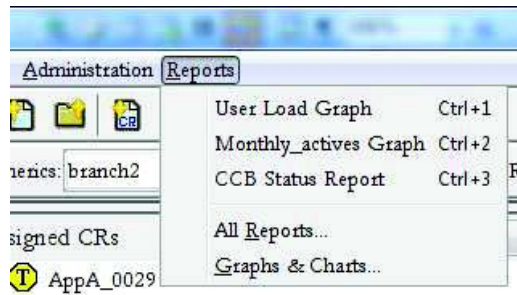
Graphs can be personalized by selecting the **Personalize graph** button. Personalization allows the user to pre-specify popular graphs and assign them up onto his/her main screen reports menu.

The personalize report button presents an argument panel similar to the one for entering the regular graph arguments. If a value is provided to a personalization argument its value is essentially hard-coded to the value for the personalized graph. If a check-box is available and you select it then when the personalized graph is run the value for this field will be obtained from the current main screen selections.

When the **Personalize** button is pressed you can enter the name that you wish to assign to this graph. This graph can now be executed directly from the main screen reports menu. To delete a personalized graph, use the **Manage Personalized Graphs** menu item select the graph(s) you wish to delete and click on the **Delete Graph** button.

Click the **Personalize** button to enter the name that you wish to assign to this report and click OK.

This graph and all other personalized graphs saved by the user can now be executed directly from the main screen reports menu without re-entering parameter values. Quick keys (Control + number 1 thru 9) will execute the first 9 personalized reports and graphs.



By checking the Project and “End-Date” during the personalization of this example report, it means that the report will find data on the current project and to the current date when the report is executed. As opposed to always running to the “Components” project and the specified end-date.

## 16.5 Custom Graph

Like custom reports, custom graphs can be requested from Spectrum Software Product Support. Straight forward graphs that has simple custom changes is part of your maintenance agreement and most graphs can be created and shipped to the customer within 24 hours of receiving the request. Once the graph has been delivered to the customer, it’s simply a matter of starting the graph installer and the custom graph will be automatically installed:

```
$ java -jar GraphInstaller.jar
```

The installer automatically installs the graph in the custom graphs directory and the graph itself is immediately available for use on the graphs & charts screen. There is no need to restart the server after installing the graph. On some operating systems you may be able to simply double click the GraphInstaller.jar file to invoke the installation.